

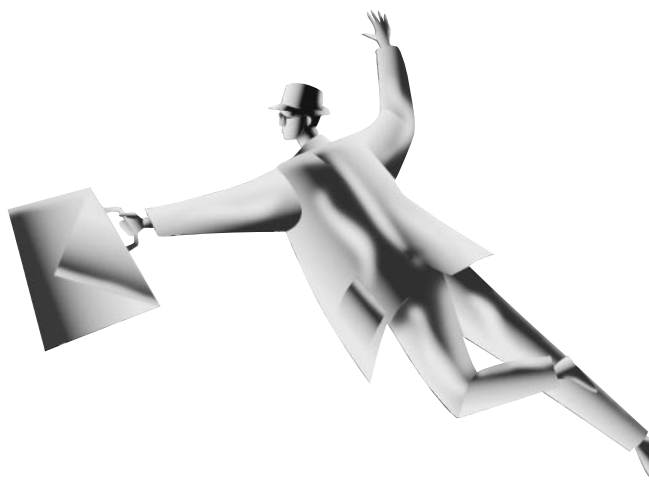
CCA:
*Citrix Certified
Administrator*



For more information and a listing of Citrix Authorized Learning Centers™, visit www.citrix.com/training

If you are responsible for setting up application servers and systems, the Citrix Certified Administrator™ (CCA) program is an excellent credential you can use to demonstrate your expertise. System administrators and Citrix business affiliates will also benefit greatly from this certification—receiving added credibility and recognition and ensuring comprehensive technical instruction on Citrix server products. Choose your specialization in either Citrix® MetaFrame XP™ 1.0 (Windows®), Citrix MetaFrame® 1.8 (Windows®), Citrix MetaFrame 1.0 or 1.1 (UNIX®) or Citrix WinFrame® 1.8.

In addition to the ability to provide your users with increased application performance, Citrix certification offers distinct benefits to you and your organization. To assist with marketing your organization and distinguishing yourself as an expert, you can use the CCA logo on business cards and brochures.



Now everything computes.™

Which courses should I take?

To become a CCA for Citrix MetaFrame XP 1.0 (Windows)

Course	Course Description	Exam
CTX-1220 Citrix MetaFrame XP 1.0 for Windows Administration	Perform advanced administrative tasks in a Citrix MetaFrame XP environment	220: Citrix MetaFrame XP 1.0 for Windows Administrator Exam

Or

To become a CCA for Citrix MetaFrame 1.8 (Windows)

Course	Course Description	Exam
CTX-302.2 Citrix MetaFrame Administration	Perform advanced administrative tasks in a Citrix MetaFrame environment	218: Citrix MetaFrame 1.8 Administrator Exam

Or

To become a CCA for Citrix MetaFrame 1.0 or 1.1 (UNIX)

Course	Course Description	Exam
CTX-3020, CTX-3021 Citrix MetaFrame Administration for UNIX Operating Systems	Perform advanced administrative tasks in a Citrix MetaFrame environment	310: Citrix MetaFrame 1.0 or 1.1 Administrator Exam for UNIX Operating Systems

Or

To become a CCA for Citrix WinFrame 1.8

Course	Course Description	Exam
CTX-181 Citrix WinFrame Administration	Perform installations and administrative tasks in a Citrix WinFrame environment	118: Citrix WinFrame 1.8 Administrator Exam

The certification process

- Attend one of the following courses to prepare for the respective CCA certification exam:
 - CTX-1220 — Citrix MetaFrame XP 1.0 for Windows Administration
 - CTX-302.2 — Citrix MetaFrame Administration for Windows
 - CTX-3020 or CTX-3021 — Citrix MetaFrame Administration for UNIX
 - CTX-181 — Citrix WinFrame Administration
- Take and pass one of the following exams:
 - Exam 220 — Citrix MetaFrame XP 1.0 for Windows
 - Exam 218 — Citrix MetaFrame 1.8 for Windows
 - Exam 310 — Citrix MetaFrame 1.0 or 1.1 for UNIX Operating Systems
 - Exam 118 — Citrix WinFrame
- You will be able to check your progress on tests and update your contact data via the Certification Management link from www.citrix.com/training
- You will receive a welcome package including a certificate, pin and logo sheet



Worldwide Headquarters
Citrix Systems, Inc.
6400 NW 6th Way
Fort Lauderdale, FL 33309 USA
Tel: +1 (800) 393 1888
Tel: +1 (954) 267 3000
www.citrix.com

Americas Headquarters
Citrix Systems, Inc.
6400 NW 6th Way
Fort Lauderdale, FL 33309 USA
Tel: +1 (800) 437 7503

European Headquarters
Citrix Systems International GmbH
Rheinweg 9
8200 Schaffhausen
Switzerland
Tel: +41 (52) 635 7700

Asia Pacific Headquarters
Citrix Systems Asia Pacific Pty Ltd.
Level 3, 1 Julius Avenue
Riverside Corporate Park
North Ryde NSW 2113
Sydney, Australia
Tel: +61 (0) 2 8870 0800

